

Early Childhood Education

CHILD DEV

.5 CTE Credit, grades 10-12

In this course students will cover topics such as: Parenting, Pre-natal Development, Birth Defects, Labor and Delivery, Discipline, Newborns, Infants, Toddlers, & Pre-schoolers. Students can take home an electronic baby and participate in a variety of hands on, real world experiences.

(Prerequisite for Early Childhood)



ECE 1/2

1 CTE Credit, Grade 10-12

This course prepares individuals for child related careers and more extensive parenting skills through hands on experience with children. This class is a combination of in class curriculum and activities as well as working directly in Lehi High's on-site pre-school.

Students will prepare mini lessons such as math, science, art, literacy, etc.. appropriate for preschool children. They will also participate in fieldtrips!



ECE 3

.5-1 CTE Credit, Grade 11-12

This is a continuation of Early Childhood 1/2. Students will primarily be in our preschool center teaching lessons. They will have opportunities to be the head teacher and help support the ECE 1/2 students. This a hands on class working with children! (Prerequisite: Early Childhood 1/2)

Preschool Aide:

.5 Elective Credit, Grade 12

Similar to a teachers aide you would assist in the preschool helping with cleaning, centers, and prepping activities. This is a participation based class with only a few spots available.

Early Childhood Ed. Pathway



Family, Career and Community
Leaders of America.

FCCLA is a National Leadership
organization for students that
promotes personal growth and
leadership development
through Family and Consumer
Science Courses (FCS)

How to Join FCCLA:

- Fill out Google Form
- Pay fee in the Financial Office
- Come participate in activities,
service projects, socials, and
competitions!
- Leadership, Scholarships,
Friends, Service, & Fun!

GET IN TOUCH



801-610-8805 Ex. 168



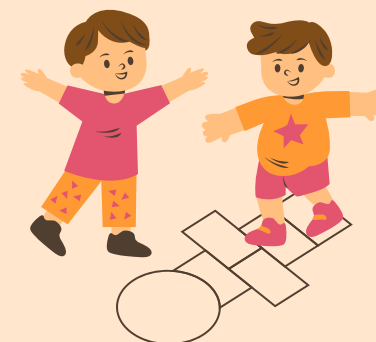
Michelle Stott



Istott@alpinedistrict.org



Lehi High School



1 Explorer course Required			Grades
FOOD AND NUTRITION	WMS & LJRH	.50	9
CHILD DEVELOPMENT	STOTT	.50	10-12
EARLY CHILDHOOD EDUCATION 1	STOTT	.50	10-12
1 concentrator course Required			
EARLY CHILDHOOD EDUCATION 2	STOTT	.50	10-12
SUGGESTED COMPLETER COURSE			
EARLY CHILDHOOD EDUCATION 3	STOTT	1.00	10-12
CTE INTERNSHIP	MCMULLIN	.50	12

ALL PATHWAYS REQUIRE 3 CREDITS TO COMPLETE

